

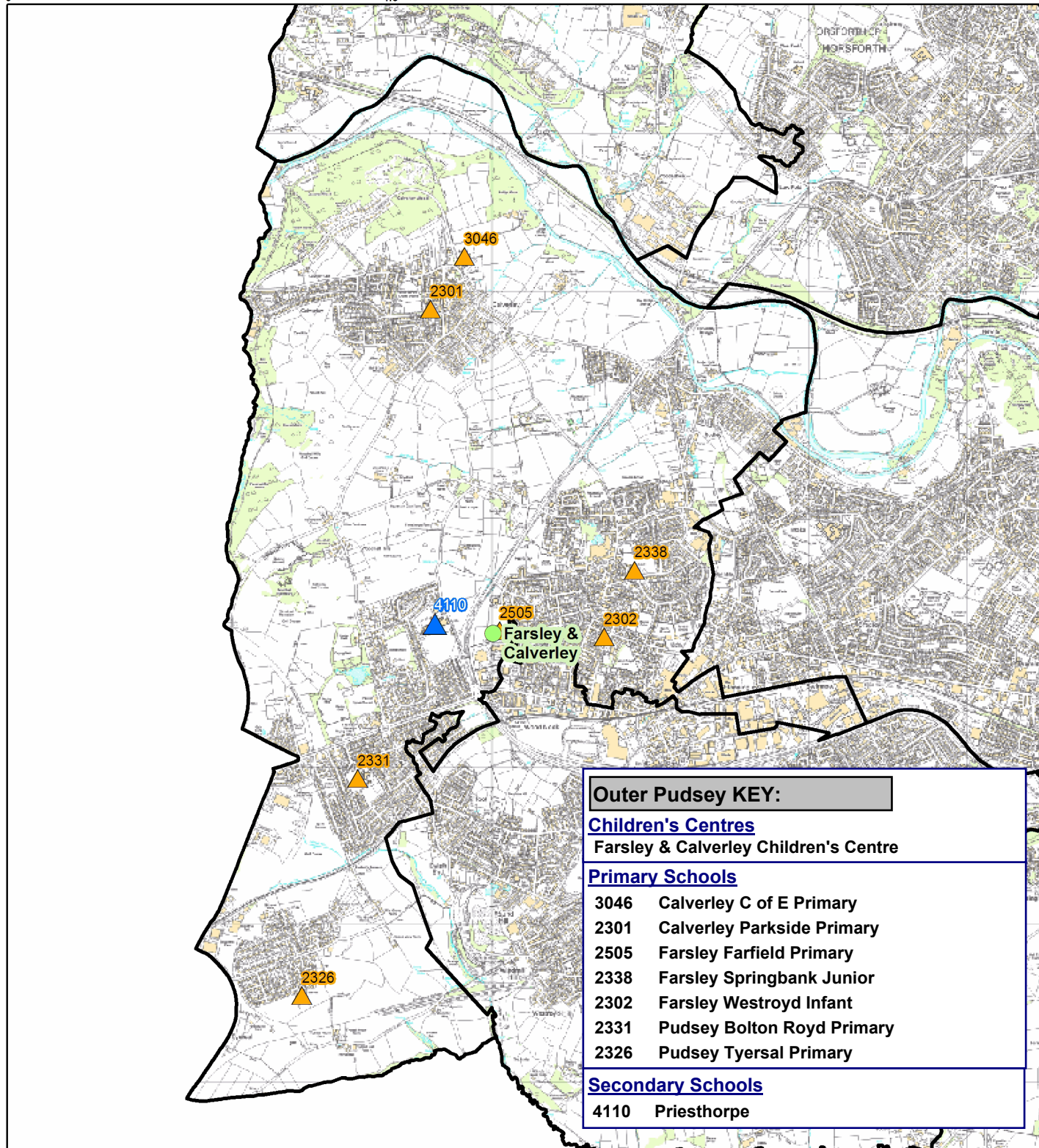
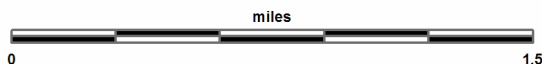
Outer Pudsey

This report was produced by the Performance team on
09/09/2011 telephone 0113 39 50701 or email
educ.pmi@leeds.gov.uk

The information in these overviews is based on the cluster
data profile V4.2

The map to the right gives the position of the cluster in Leeds.

The map below shows the cluster in greater detail, highlighting
the location of the Children's Centres, Primary and Secondary
Schools in the cluster.



Cluster Overview

Data Source: January School Census				Source Data: Children's Services	
Primary Schools		Total numbers on roll			Children's Centre Ofsted ID
DFE		2009	2010	2011	
3046	Calverley C of E Primary	270	278	281	Farsley & Calverley Children's Centre
2301	Calverley Parkside Primary	255	262	253	
2505	Farsley Farfield Primary	394	388	384	
2338	Farsley Springbank Junior	220	218	202	
2302	Farsley Westroyd Infant	241	257	254	
2331	Pudsey Bolton Royd Primary	460	465	479	
2326	Pudsey Tyersal Primary	229	226	225	
Total		2069	2094	2078	
Secondary Schools					
4110	Priesthorpe	1175	1159	1159	
Total		1175	1159	1159	

Data Source: The Office of National Statistics mid-year population estimates									
Population Estimates	0-15			Working Age			Over 60/65+		
Number of people by age group/year:	07	08	09	07	08	09	07	08	09
Cluster	3550	3552	3688	13297	13453	13696	3866	3904	3977
Area	44285	44108	44366	206614	207876	208717	46759	47163	47875
Leeds All	133181	132741	133396	510581	516578	522769	128416	129937	131536

Data Source: NHS Leeds												
Under fives	September 2009						September 2010					
Number of infants by age group:	0-1	1-2	2-3	3-4	4-5	Total	0-1	1-2	2-3	3-4	4-5	Total
Cluster	277	244	251	217	214	1203	262	272	244	237	220	1235
Area	3241	2999	3023	2814	2818	14895	3318	3278	3014	3023	2870	15503
Leeds All	9658	9468	9060	8891	8657	45728	10202	9848	9478	9195	9113	47836

Data Source: January school census											
KEY: Free School Meals (FSM), Special Educational Needs (SEN) and English as an additional Language (EAL)											
Percentage of pupils who are:			FSM eligible			SEN (All)			EAL		
			09	10	11	09	10	11	09	10	11
Primary											
Cluster	School		9.3	10.2	11.8	12.2	12.4	13.2	21.4	21.3	20.7
Cluster	Residence		7.7	9.2	11.1	12.6	12.0	13.9	15.4	15.8	15.5
Area	School		17.0	18.7	19.7	15.8	15.1	15.3	12.8	13.3	14.0
Total Primary	School		19.9	21.5	22.2	17.7	17.8	17.8	15.2	15.8	16.5
Secondary											
Cluster	School		13.5	14.5	15.6	8.4	10.7	14.8	24.9	26.4	28.3
Cluster	Residence		6.7	6.9	8.7	12.3	14.2	14.3	14.1	13.9	14.6
Area	School		15.0	16.0	16.3	18.2	19.2	17.8	9.2	9.6	9.8
Total Secondary	School		18.0	19.0	19.4	22.6	21.4	20.4	9.7	10.4	10.0
All pupils living in cluster	Residence		7.3	8.3	10.1	12.5	12.9	14.0	14.8	15.0	15.1
All pupils living in area	Residence		15.7	17.2	18.3	17.7	17.6	17.4	9.0	9.5	10.1
Leeds All			19.2	20.6	21.1	20.4	20.0	19.6	12.8	13.4	13.7

Data Source: HM Revenue and Customs										
Child Poverty	Number of Children (under 16) in families in receipt of CTC or IS/JSA			Number of Children (all ages) in families in receipt of CTC or IS/JSA			Number of children in poverty, by age of youngest child, 2008			
	2006	2007	2008	2006	2007	2008	0-4	5-10	11-15	16-19
Cluster	300	340	340	325	395	395	185	115	70	25
Area	7760	8010	7990	8495	8935	8950	4630	2530	1415	305
Leeds All	29185	30235	29700	31750	33690	33300	17625	9195	5055	1160

Data Source: January School Census and 2010 Index of Multiple Deprivation											
IMD	Percentage of pupils resident in most deprived areas		3% IMD			10% IMD			20% IMD		
			09	10	11	09	10	11	09	10	11
Primary											
Cluster	School		8.7	8.6	7.0	17.3	17.1	15.7	19.0	19.0	19.0
Cluster	Residence		0.0	0.0	0.0	0.0	0.0	0.0	0.0	0.0	0.0
Area	School		1.5	1.5	2.8	15.6	15.6	15.0	26.7	26.8	27.6
Total Primary	School		8.1	8.2	8.4	28.1	28.1	27.1	36.5	36.6	37.6
Secondary											
Cluster	School		10.4	10.5	8.2	24.4	26.0	23.4	27.5	29.8	29.2
Cluster	Residence		0.0	0.0	0.0	0.0	0.0	0.0	0.0	0.0	0.0
Area	School		2.9	2.6	3.1	15.8	15.0	14.2	25.4	24.6	25.0
Total Secondary	School		7.1	7.0	7.5	24.3	24.0	23.5	32.7	32.3	33.5
All pupils living in cluster	Residence		0.0	0.0	0.0	0.0	0.0	0.0	0.0	0.0	0.0
All pupils living in area	Residence		0.0	0.0	1.5	10.7	10.5	10.6	22.0	21.9	23.2
Leeds All			7.7	7.7	8.0	26.5	26.4	25.7	35.0	34.8	35.9

Data Source: January School Census and CACI ACORN												
KEY: Wealthy Achievers (WA), Urban Prosperity (UP), Comfortably Off (CO), Moderate Means (MM), Hard Pressed (HP)												
ACORN			2010					2011				
percentage of pupils in each acorn category:			WA	UP	CO	MM	HP	WA	UP	CO	MM	HP
Primary												
Cluster	School		13.8	2.7	48.4	18.1	15.8	16.4	3.1	46.8	19.3	13.2
Cluster	Residence		17.3	2.0	63.2	6.9	10.1	19.9	2.7	58.8	9.5	8.5
Area	School		13.7	8.1	31.6	13.8	31.4	14.6	8.0	31.3	13.0	32.3
Total Primary	School		14.9	6.2	27.1	16.1	34.4	15.4	5.9	27.8	15.8	34.3
Secondary												
Cluster	School		9.1	1.0	43.3	22.9	23.2	11.9	1.5	40.7	25.5	19.4
Cluster	Residence		17.5	1.6	61.9	7.2	11.4	21.4	0.9	57.5	10.3	8.9
Area	School		17.1	7.7	32.5	13.5	28.3	18.4	7.0	32.6	12.6	28.8
Total Secondary	School		16.2	5.8	29.3	14.9	32.9	17.1	5.2	29.7	14.7	32.5
All pupils living in cluster	Residence		17.4	1.8	62.6	7.1	10.6	20.6	1.9	58.3	9.9	8.7
All pupils living in area	Residence		14.5	7.5	34.0	12.5	30.7	15.5	7.4	33.5	11.9	31.4
Leeds All			15.4	6.0	28.0	15.6	33.9	16.1	5.6	28.5	15.4	33.6

Data Source: DWP Information Directorate												
KEY: Job Seekers Allowance (JSA), Incapacity Benefit (IB), Lone Parent Benefit (LPB), Total Out of Work (TOW)												
Unemployment	2007				2008				2009			
Percentage of working age people in receipt of:	JSA	IB	LPB	TOW	JSA	IB	LPB	TOW	JSA	IB	LPB	TOW
Cluster	1.3	4.4	0.7	6.5	1.4	4.3	0.6	6.6	2.8	4.2	0.7	7.9
Area	1.9	4.9	1.3	8.2	2.1	4.8	1.3	8.4	3.5	4.7	1.2	9.8
Leeds All	2.6	6.2	1.9	11.0	2.7	6.0	1.9	11.0	4.4	5.9	1.8	12.6

Data Source: Axiom Lifestyle Survey 2010										
% Property Type							% Length of residence			
	Owned	Rented - Council		Rented - Private			Less than 1 year	2-5 years	More than 5 years	
Cluster	83.1	9.0		7.9			4.7	18.3	77.1	
Area	62.8	21.6		15.6			9.4	18.1	72.5	
Leeds All	61.6	23.9		14.6			7.1	17.5	75.4	
% Income							% Struggling			
	<10k	10-20k	20-30k	30-40k	40-50k	50k+	Food	Mortgage	Bills	
Cluster	11.7	18.4	13.5	16.9	12.8	26.7	9.9	1.6	10.1	
Area	17.1	20.3	15.7	16.7	11.1	19.1	11.1	2.0	12.6	
Leeds All	18.3	20.0	14.7	17.6	13.2	16.2	10.8	2.2	13.0	
% of Households with 1 or more people that have:							% Car ownership			
	no qualifications		degree or higher qualification				No car	1 car	2+ cars	
Cluster			5.6				16.0	37.5	46.5	
Area			5.8				28.0	40.8	31.2	
Leeds All			6.2				28.3	42.5	29.2	

Being Healthy

Data Source: NHS Leeds									
Maternity and teenage conception	Number and Rate of conception per 1000 15-17 year olds June 08 - June 09		% Women receiving a health and social care needs assessment at 12 weeks as a percentage of live births in the same year		% initiating breastfeeding		% breastfeeding at 6 weeks		
	Number	Rate	Jan-Dec 2009	Jan-Nov 2010	Apr 09 Mar 10	Apr 10 Jan 11	Apr 09 Mar 10	Apr 10 Jan 11	
Cluster	8	24.0	92.5	89.5	79.5	73.1	53.0	40.5	
Area			83.7	85.9	71.6	65.8	43.1	35.1	
Leeds All		49.8	81.3	82.8	69.6	63.3	41.3	35.0	
Birth Data									
3 year rolling average of births below 2.5kg			05-07	06-08	07-09				
Cluster			4.8	3.8	6.3				
Leeds All			7.9	7.8	7.8				
Emergency Hospital Admissions		Number of Emergency Admissions by age group 2005-2009			Number of emergency admissions to hospital for injury, poisoning and certain other consequences of external causes by age group 2005-09				
		0-4	5-10	11-18	0-4	5-10	11-18		
Cluster		511	156	321	54	55	96		
Leeds All		25499	7966	19445	3113	2478	7249		
Immunisations		% of 2 year olds receiving vaccinations in quarter 3 for:				% of 5 year olds receiving vaccinations in quarter 3 for:			
		<u>Diphtheria</u>		<u>MMR</u>		<u>Diphtheria</u>		<u>MMR</u>	
		09-10	10-11	09-10	10-11	09-10	10-11	09-10	10-11
Cluster		98.2	100.0	98.2	93.3	98.2	97.9	96.5	93.6
Area		96.9	96.8	87.6	90.5	95.0	93.4	93.1	89.8
Leeds All		96.2	96.2	86.1	88.1	94.9	94.0	90.9	91.4

Make a positive Contribution

Data Source: West Yorkshire Police										
Property Crime	Burglary		Burglary		Criminal				Vehicle	
Number of recorded Crimes for:	Dwelling		Elsewhere		Damage		Robbery		Crime	
	09	10	09	10	09	10	09	10	09	10
Cluster	219	270	130	184	257	217	7	13	181	168
Area	4156		2127		4299		379		2945	
Leeds All	9086	9508	5901	5681	15671	13599	1305	1297	9681	9168

Personal Crime			Drug Offences		Theft from person		Violent Crime	
Number of recorded Crimes for:			09	10	09	10	09	10
Cluster			9		9	8	138	129
Area			187		290		2966	
Leeds All			2537	1248	1537	2235	12748	11233

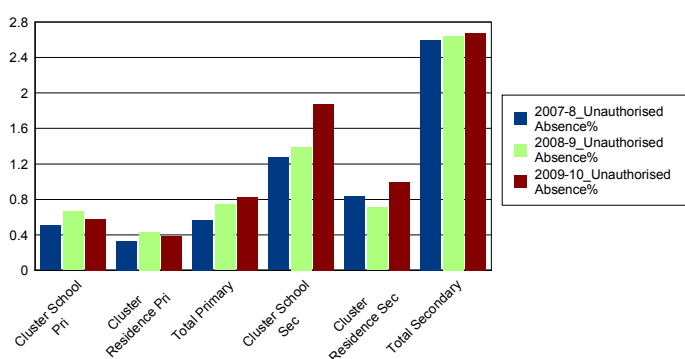
Data Source: Youth Offending Service									
Number of offenders and offences 2008-10									
	Number of Offenders				Number of Offences				
	07-08	08-09	09-10		07-08	08-09	09-10		
Cluster	24	17	13		30	27	22		
Leeds All	2741	2166	1522		6331	4883	3134		

April 2009 - March 2010 number of offences by young offenders

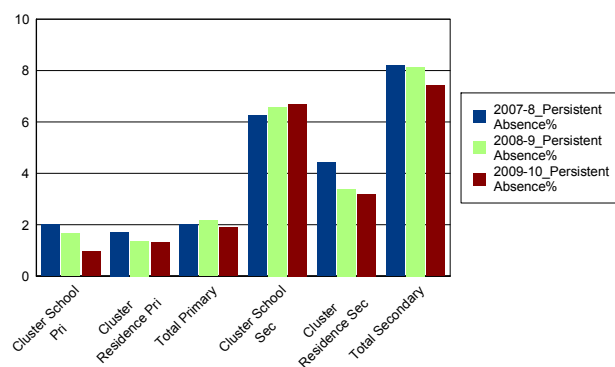
	Burglary	Breaches	Criminal Damage	Drugs	Motoring and Vehicle	Other	Public Order	Theft and handlind	Violence against the person
Cluster	<5	<5	5	<5	<5	<5	<5	5	5
Leeds All	282	301	333	155	230	328	314	626	565

Data Source: School Census													
Attendance and Persistent Absence by percentage		Attendance			Authorised Absence			Unauthorised Absence			Persistent Absence		
		07-08	08-09	09-10	07-08	08-09	09-10	07-08	08-09	09-10	07-08	08-09	09-10
Primary													
Cluster	School	94.5	94.3	94.7	5.0	5.1	4.7	0.5	0.7	0.6	2.0	1.7	1.0
Cluster	Residence	95.1	94.8	94.8	4.6	4.8	4.8	0.3	0.4	0.4	1.7	1.4	1.3
Total Primary		94.7	94.3	94.4	4.8	5.0	4.7	0.6	0.7	0.8	2.0	2.2	1.9
Secondary													
Cluster	School	92.5	91.7	92.0	6.2	6.9	6.1	1.3	1.4	1.9	6.2	6.6	6.7
Cluster	Residence	93.8	93.6	93.8	5.4	5.7	5.2	0.8	0.7	1.0	4.4	3.4	3.2
Total Secondary		91.4	91.5	91.6	6.0	5.9	5.7	2.6	2.6	2.7	8.2	8.1	7.4

Percentage Unauthorised Absence



Percentage Persistent Absence



Data Source: Children's Services													
Exclusions		Fixed Term Exclusions						Permanent Exclusions					
		Number			Rate per thousand			Number			Rate per thousand		
		07-08	08-09	09-10	07-08	08-09	09-10	07-08	08-09	09-10	07-08	08-09	09-10
Primary													
Cluster	School	9	21	11	4.5	10.1	5.3	0	0	0	0.0	0.0	0.0
Cluster	Residence	8	15	9	5.2	9.4	5.5	0	0	0	0.0	0.0	0.0
Total Primary		447	467	367	7.4	7.7	6.0	1	2	2	0.0	0.0	0.0
Secondary													
Cluster	School	147	150	150	123.2	127.7	129.4	2	3	2	1.7	2.6	1.7
Cluster	Residence	86	71	74	72.8	60.9	62.2	0	1	1	0.0	0.9	0.8
Total Secondary		5063	4351	4277	110.2	93.6	92.9	60	52	57	1.3	1.1	1.2

Achieve Economic Well Being

KEY: Not in Employment, Education or Training(NEET), In Employment, Education or Training(EET), In Full time Education (FE)

Data Source: November destination survey

NEET/FE		Number of NEET			% NEET			Number of FE			% FE		
		2008	2009	2010	2008	2009	2010	2008	2009	2010	2008	2009	2010
Cluster													
School	Year 11	7	12	8	3.4	5.5	3.9	173	181	177	85.2	83.0	87.2
	Year 12	<5	<5	<5	<5	<5	<5	81	90	95	86.2	83.3	92.2
	Year 13	<5	<5	<5	<5	<5	<5	61	51	61	93.8	76.1	77.2
Residence	Year 11	8	9	7	4.3	4.5	3.8	160	166	167	86.5	83.8	89.8
	Year 12	<5	<5	<5	<5	<5	<5	105	97	99	89.0	87.4	92.5
	Year 13	<5	<5	<5	<5	<5	<5	80	71	66	94.1	82.6	74.2
Leeds All													
	Year 11	705	646	393	8.3	7.7	4.8	6678	6703	7194	78.4	79.7	87.3
	Year 12	162	132	67	4.7	3.5	1.8	3098	3436	3476	89.3	89.9	93.3
	Year 13	79	121	135	3.3	4.5	4.3	1969	2067	2350	83.4	77.6	75.6

Data Source: Integrated Youth Support Service

16-18 Neet and EET November 2010-January 2011		NEET		EET		Not Known		Other Activity	
		Number	%	Number	%	Number	%	Number	%
Cluster		23	5	461	94	<5	<5	<5	<5
Leeds All		1783	8	20207	88	561	2	320	1.4

Please Note: Leeds totals for 16-18 NEET will not match publicised totals as published totals include a proportion of those whose status has expired

Enjoy and Achieve

Data Source: Keypas and DFE performance tables

Foundation Stage Profile Data

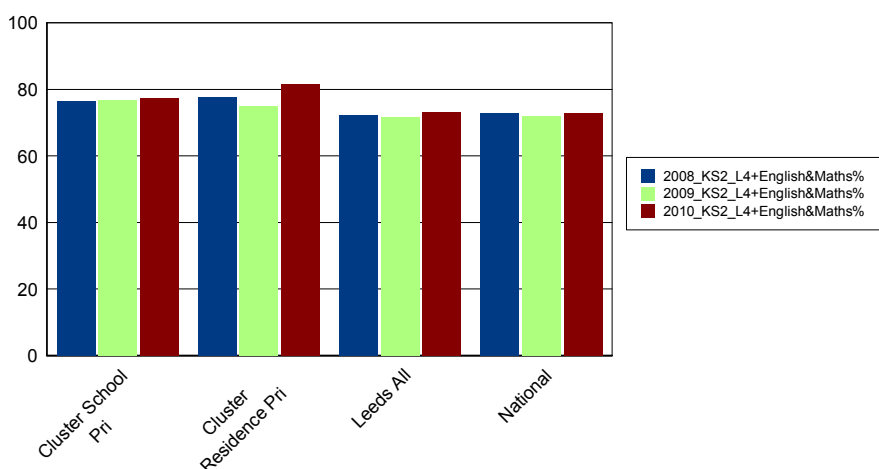
The percentage of pupils achieving a Good Level of Development (78+ points overall and 6+ points in all PSE and CLL strands)

		2008	2009	2010
Cluster	School	51	57	59
Cluster	Residence	50	59	61
Leeds All		47	51	53

KS2 Data

		English 4+			English 5+			Maths 4+			Maths 5+			English and Maths 4+		
		08	09	10	08	09	10	08	09	10	08	09	10	08	09	10
Cluster	School	85.0	86.1	85.5	35.0	40.9	33.2	81.7	80.3	80.5	28.3	35.1	38.2	76.7	76.8	77.5
Cluster	Residence	86.3	85.9	87.3	35.4	35.2	36.6	83.4	80.4	83.4	30.9	32.2	42.0	77.7	74.9	81.5
Area	School	83.1	82.6	82.5	33.0	32.1	34.4	79.7	80.0	81.8	32.6	33.5	33.5	74.8	74.6	76.5
Area	Residence	83.0	82.5	82.1	33.9	32.8	35.2	80.1	80.2	81.5	33.5	34.1	34.5	75.1	74.8	76.4
Leeds All		80.9	79.1	79.3	29.6	28.2	30.6	77.5	77.2	79.0	30.0	32.6	31.2	72.2	71.6	73.2
National		81.0	80.0	73.0	30.0	29.0	33.0	79.0	79.0	79.0	31.0	35.0	34.0	73.0	72.0	73.0

% English and Maths Level 4+



Data Source: EPAS and DFE performance tables

KS4 Data

		% of 5+ A*-C GCSE			% of 5+ A*-C inc EM GCSE			% of 5+ A*-G GCSE			% of 1+ A*-G GCSE			% no GCSE Passes		
		08	09	10	08	09	10	08	09	10	08	09	10	08	09	10
Cluster	School	64.0	78.9	74.9	43.0	42.6	55.7	98.0	95.2	98.0	100.0	100.0	99.5			0.5
Cluster	Residence		80.5	81.9		55.4	62.2		96.4	96.3		99.5	99.5		0.5	0.5
Area	School	64.4	68.1	74.5	49.5	47.5	53.1	92.2	92.1	94.1	98.3	98.5	98.8	1.7	1.5	1.1
Area	Residence		67.7	74.3		47.4	52.6		91.3	93.0		97.9	97.9		2.1	1.6
Leeds All		62.5	67.5	76.5	46.4	45.9	50.6	90.6	91.3	93.7	97.7	97.7	98.0	1.9	2.3	1.6
National		65.3	70.0	75.4	47.6	49.8	53.5	91.6	92.3	92.9	98.6	98.9	99.1	1.4	1.1	0.9

% 5+ A*-C inc English and Maths GCSE

